



*Hi-Rel By Design*

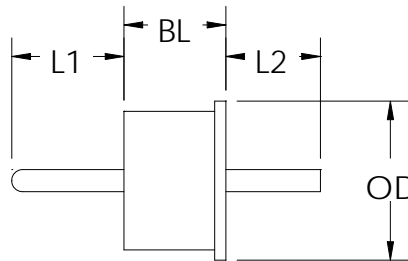
39 Souhegan Street - P.O. Box 269, Wilton, New Hampshire 03086

TEL (603) 654-2002 FAX (603) 654-2533

email: sales@shp-seals.com - website: www.shp-seals.com

**HERMETIC FEEDTHRU**

**PATENTED**  
Canada Patent No. 1,318,371



**ALUMINUM COMPATIBLE**

Designed specifically for use in aluminum housings, our feedthrus will provide highly reliable hermetic sealing in cyclic military and processing temperature environments, when installed in accordance with recommended application data. Our feedthrus will also minimize assembly time and enhance solder joint quality. Max leak rate 1 X 10<sup>-8</sup> cc/sec @ 1 atm (He).

STANDARD SEALS (1) (7)									
PART NO.				OTHER DIMENSIONS			f <sub>c</sub>	MATERIAL	
SERIES	L1 (4) ±.005	L2(4) (8) ±.005	PLATING CODE (2) (3)	OD +.001 -.002	BL ±.002	PIN DIA. RF ±.0005 DC ±.0015	GH z	GLASS Corning or Equiv.	FERRULE & PIN
<b>50 Ω (6)</b>									
SHP8612	xxxR	xxx	01	.086	.062	.012	45	7070	ASTM-F15
SHP9815	xxxR	xxx	01	.098	.062	.015	40	7070	
SHP98B12	xxxR	xxx	01	.098	.062	.012	49	7070	
SHP1115	xxxR	xxx	01	.110	.060	.015	40	7070	
SHP1218	xxxR	xxx	01	.120	.060	.018	30	7070	
SHP1520	xxxR	xxx	01	.158	.060	.020	23	7052	
SHP1536/20	085C (9)	xxx	01	.158	.060	.036/.020	23	7052	
<b>DC (5)</b>									
SHP60xx	xxx	xxx	01	.060	.050	.015, .018, .020, .021	N/A	7052	ASTM-F15
SHP74Bxx	xxx	xxx	02	.074	.073	.020, .025		9013	STEEL
SHP74Cxx	xxx	xxx	02	.074	.062	.020, .025		9013	STEEL
SHP74Dxx	xxx	xxx	02	.074	.040	.020, .025		9013	STEEL
SHP98Axx	xxx	xxx	02	.098	.062	.025, .030		9013	STEEL
SHP13xx	xxx	xxx	02	.138	.110	.030, .040, .050		9013	STEEL

**Example Part No: SHP9815-075R-125-01**

- NOTES: (1) Seals of any desired geometry can be provided. Contact us for your special requirements.  
 (2) Standard plating for ASTM-F15 is 50 microinches minimum GOLD per MIL-G-45204, Type III, Grade A over 100-200 microinches NICKEL per MIL-C-26074. Plating thickness is measured on pin.  
 (3) Standard plating for STEEL is 50 microinches minimum GOLD per MIL-G-45204, Type III, Grade A over 200-400 microinches NICKEL per MIL-C-26074. Plating thickness is measured on pin.  
 (4) Standard pin termination is straight-cut (radius on L1 end on 50 Ω). Special pin terminations are also available (see page 3).  
 (5) Insert desired pin diameter in thousandths, in series.  
 (6) RF feedthrus are stocked with various standard L1 lead lengths for quicker delivery. Contact us for details.  
 (7) See Bulletin 200 for solder preforms.  
 (8) ±.003 on 50 Ω  
 (9) ±.010

**All dimensions are inches**



39 Souhegan Street - P.O. Box 269, Wilton, New Hampshire 03086

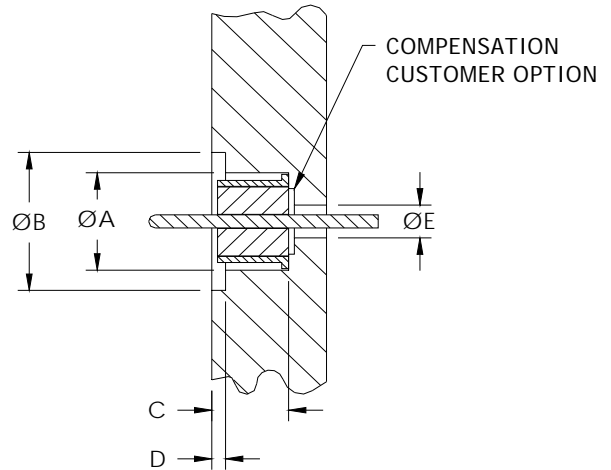
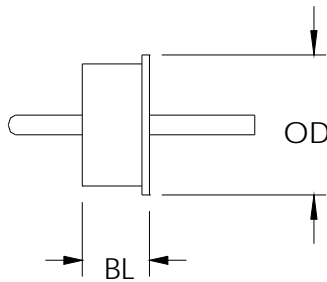
TEL (603) 654-2002 FAX (603) 654-2533

email: sales@shp-seals.com - website: www.shp-seals.com

**HERMETIC FEEDTHRU**

**PATENTED**  
Canada Patent No. 1,318,371

**APPLICATION DATA**



FEEDTHRU CONFIGURATION			RECEPTACLE CONFIGURATION				AIR	TFE
SERIES	OD +.001 / -.002	BL ±.002	A ±.001	B ±.002	C ±.002	D ±.002	E (1) ±.001	
SHP60	.060	.050	.063	.096	.055	.012	.050	
SHP74B	.074	.073	.077	.124	.078	.012	.062	
SHP74C	.074	.062	.077	.114	.067	.012	.062	
SHP74D	.074	.040	.077	.114	.045	.012	.062	
SHP8612	.086	.062	.089	.126	.067	.012	.028	.041
SHP9815	.098	.062	.101	.140	.067	.012	.035	.051
SHP98A	.098	.062	.101	.140	.067	.012	.075	
SHP98B12	.098	.062	.101	.140	.067	.012	.028	.041
SHP1115	.110	.060	.113	.150	.065	.012	.035	.051
SHP1218	.120	.060	.123	.160	.065	.012	.042	.061
SHP13	.138	.110	.141	.198	.115	.012	.093	
SHP13A*	.138	.110	.141	.181	.060	.035	.131	
SHP1520	.158	.060	.161	.200	.065	.012	.046	.067

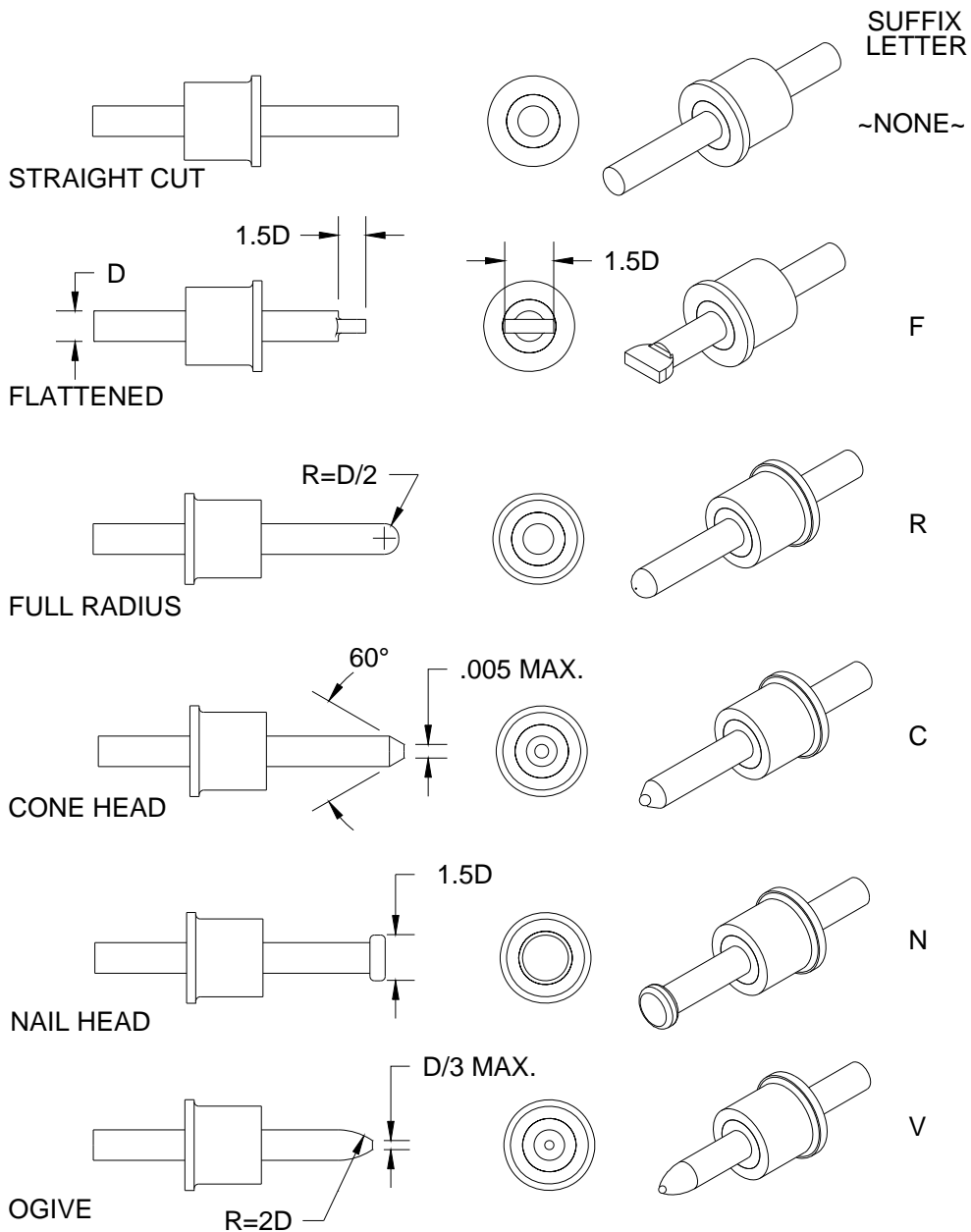
NOTE: \*For use with two preforms under limited diameter conditions. See Bulletin 200 for solder preforms.  
(1) Recommended for 50 Ω match on RF or optimum manufacturability on DC.

All dimensions are inches.



**HERMETIC FEEDTHRU**

**PIN TERMINATIONS**



Example Part No: SHP98A25-250N-200-02

**NOTE: Insert suffix letter at end of appropriate lead length in part number.**