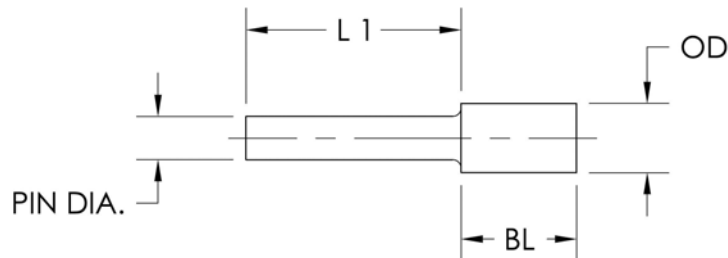
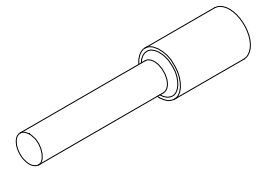




39 Souhegan Street - P.O. Box 269, Wilton, New Hampshire 03086
 TEL (603) 654-2002 FAX (603) 654-2533
 email: sales@shp-seals.com - website: www.shp-seals.com

ISO 9001:2008 Certified

EXTERNAL GROUND PIN



This ground pin is designed for ease of solderability in a variety of housing materials as well as for high solder joint reliability in severe thermal cyclic environments. Its enlarged base and application geometry facilitate plating in the blind bore, thereby ensuring a sound solder joint.

SERIES	L1 ±.005	BL ±.002	PLATING CODE ⁽³⁾ (⁴)	PIN DIA. ±.0015	OD ±.002	MATERIAL
SHPP15/30	xxx	.037	02	.015	.030	LOW CARBON STEEL
SHPP25/40	xxx	.067	02	.025	.040	LOW CARBON STEEL
SHPPK25/40	xxx	.067	01	.025	.040	ASTM-F15 OR MIL-I-23011, CLASS 1
SHPP30/40	xxx	.067	02	.030	.040	LOW CARBON STEEL

Example Part No: SHPP25/40-xxx-067-02

- NOTES: (1) XXX - Insert L1 pin length in thousandths.
 (2) See Bulletin 200 for solder preforms.
 (3) Standard plating for STEEL is 50 microinches minimum GOLD per MIL-G-45204, Type III, Grade A over 200-400 microinches NICKEL per MIL-C-26074.
 (4) Standard plating for ASTM-F15 is 50 microinches minimum GOLD per MIL-G-45204, Type III, Grade A over 100-200 microinches NICKEL per MIL-C-26074.

All dimensions are inches.

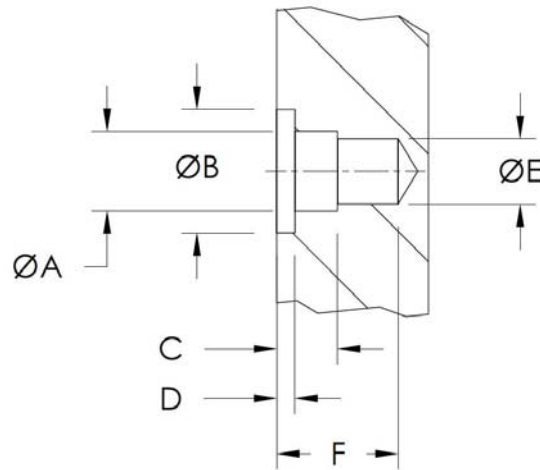


39 Souhegan Street - P.O. Box 269, Wilton, New Hampshire 03086
 TEL (603) 654-2002 FAX (603) 654-2533
 email: sales@shp-seals.com - website: www.shp-seals.com

ISO 9001:2008 Certified

EXTERNAL GROUND PIN

APPLICATION DATA



RECEPTACLE CONFIGURATION						
SERIES	A ±.001	B ±.002	C ±.002	D ±.002	E ±.001	F ±.002
15/30	.042	.065	.032	.012	.033	.050
25/40	.052	.081	.040	.012	.043	.080
30/40	.052	.081	.040	.012	.043	.080

All dimensions are inches.