

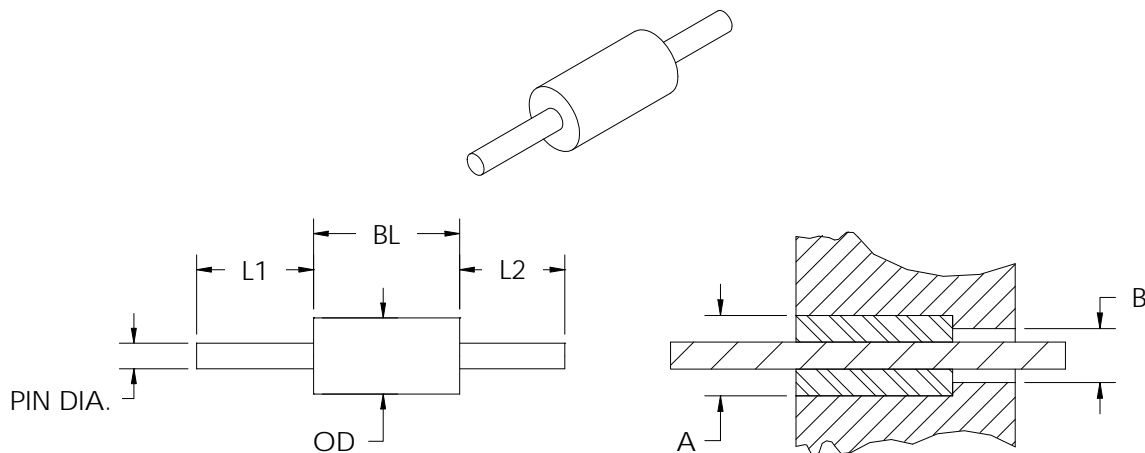


39 Souhegan Street - P.O. Box 269, Wilton, New Hampshire 03086
 TEL (603) 654-2002 FAX (603) 654-2533
 email: sales@shp-seals.com - website: www.shp-seals.com

ISO 9001:2008 Certified

TFE FEEDTHRUS

These readily available, cost effective feedthrus provide 50 ± 2 Ohm transmission lines when installed as recommended in metal housings. TFE and pin lengths can be tailored to customer requirements, providing finished parts for immediate use. Standard plating facilitates reliable soldering or bonding.



STANDARD TFE FEEDTHRUS								
PART NO.					DIMENSIONS		APPLICATION DIMENSIONS	
SERIES	BL ⁽⁴⁾ ±.005	L1 ⁽⁴⁾ ±.005	L2 ⁽⁴⁾ ±.005	PLATING CODE ⁽¹⁾	OD ^{±.001}	PIN DIA.	A ±.001	B ±.001
5012	xxx	xxx	xxx	01	.039	.012 ⁽²⁾	.041	.028
5015	xxx	xxx	xxx	01	.049	.015 ⁽²⁾	.051	.035
5018	xxx	xxx	xxx	01	.059	.018 ⁽³⁾	.061	.042
5020	xxx	xxx	xxx	01	.065	.020 ⁽³⁾	.067	.046

Example Part No. 5015-040-030-060-01

- NOTES: (1) Standard plating (pin) is 50 microinches minimum GOLD per MIL-G-45204, Type III, Grade A over 100-200 microinches NICKEL per MIL-C-26074.
 (2) Tolerance is $\pm .0005$
 (3) Tolerance is $\pm .001$
 (4) Maximum BL available is .400.
 (5) Specify length in thousandths.
 (6) Bushing material is TFE, dielectric constant $2.05 \pm .05$.
 (7) Pin material is Iron Nickel Alloy. Other materials available, please contact SHP.

All dimensions are inches.