

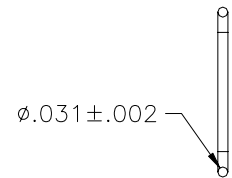
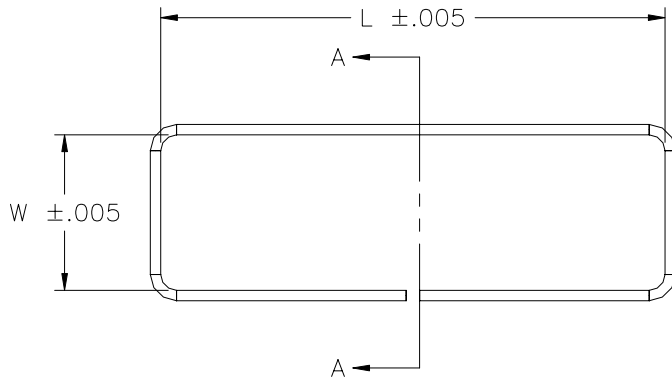


39 Souhegan Street - P.O. Box 269, Wilton, New Hampshire 03086

TEL (603) 654-2002 FAX (603) 654-2533

email: sales@shp-seals.com - website: www.shp-seals.com

**SOLDER PREFORMS
HSMHE CONNECTORS**



SECTION A-A

These preforms are designed specifically for SHP HSMHE Connectors. They provide optimum flow and fillet when used with the recommended preform well and are available in two solder alloys per EIA J-STD-006: Sn62, Sn63.

CONNECTOR SERIES	NO. OF PINS	PREFORM PART NO. (see note 1)	L	W
HSMHE	9	HSMPF-9P-xx	1.185	.465
	15	HSMPF-15P-xx	1.510	.465
	25	HSMPF-25P-xx	2.050	.465
	37	HSMPF-37P-xx	2.700	.465

Example Part No. HSMPF-9P-62

NOTES: (1) Insert last 2 digits of desired solder in place of xx (62 or 63).

Solder Melting Temperatures

Sn62 - 179°C (354°F)

Sn63 - 183°C (361°F)

All dimensions are inches.