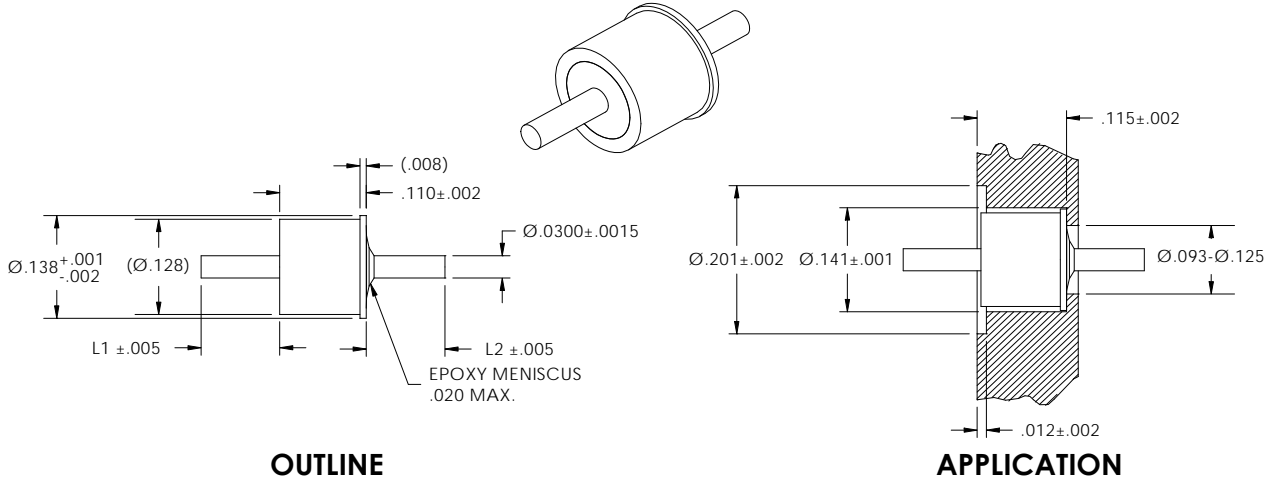




**HERMETIC CAPACITORS**  
**1330 Series**



**OUTLINE**

**APPLICATION**

**ALUMINUM COMPATIBLE**

Our design assures long cyclic solder joint life in high expansion materials such as aluminum. Capacitor construction complies with MIL-F-15733 with capacitance values up to 30,000 pF GMV (+100% / -0). Available in configuration shown as well as reverse option (glass on flange end).

SPECIFICATIONS	
Voltage Rating	50 VDC (higher available)
Current Rating	5 Amps Max
Insulation Resistance	Greater than 1.5 G Ω @ 25°C
Dissipation Factor	Less than 3%
Max. Temp. <sup>(4)</sup> / Min. Temp. <sup>(5)</sup> / Operating Range	250°C / -65°C / -55°C to +125°C
Leak Rate	Less than 1 X 10 <sup>-8</sup> cc/sec @ 1 atm (He)

PART NO.					MATERIAL		
CAPACITANCE VALUE <sup>(1)</sup>	SERIES	L1 ±.005 <sup>(3)</sup>	L2 ±.005 <sup>(3)</sup>	PLATING CODE <sup>(2)</sup>	Glass	Ferrule	Pin
Cxxx	1330	xxx	xxx	02	9013	Steel	Alloy 52
Cxxx	13R30	xxx	xxx	02			

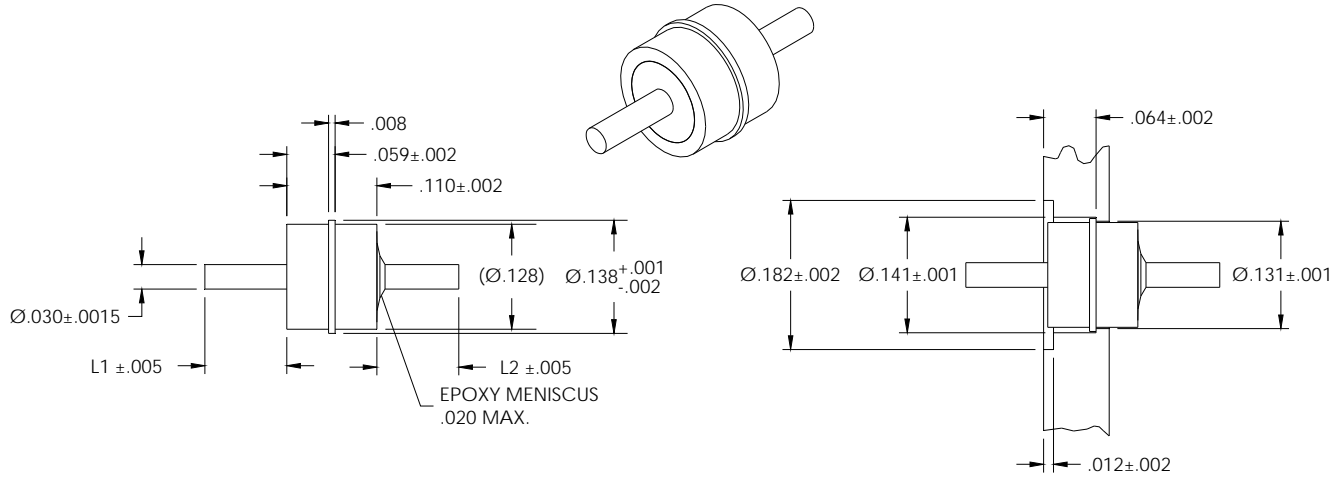
Example Part No: C502-1330-125-075-02

- NOTES: (1) Specify capacitance value. Enter first two digits of value then the number of zeros that follow. Example: C502 equals 5,000pF.  
 (2) Standard plating is 50 microinches minimum GOLD per MIL-G-45204, Type III, Grade A over 200-400 microinches NICKEL per MIL-C-26074. Plating thickness is measured on pin.  
 (3) Standard pin termination is straight-cut. Special pin terminations are also available (See Bulletin 100, pg 3).  
 (4) Short term process temperature.  
 (5) Storage temperature.  
 (6) See Bulletin 200 for solder preforms.

**All dimensions are inches.**



**HERMETIC CAPACITORS**  
**13A30 Series**



**OUTLINE**

**ALUMINUM COMPATIBLE**

**APPLICATION**

This design incorporates a center flange to facilitate effective flush mounting in thinner walls. Capacitor design is per MIL-F-15733 and is available in capacitance values up to 30,000 pF GMV (+100% / -0).

SPECIFICATIONS	
Voltage Rating	50 VDC (higher available)
Current Rating	5 Amps Max
Insulation Resistance	Greater than 1.5 G Ω @ 25°C
Dissipation Factor	Less than 3%
Max. Temp. <sup>(4)</sup> / Min. Temp. <sup>(5)</sup> / Operating Range	250°C / -65°C / -55°C to +125°C
Leak Rate	Less than 1 X 10 <sup>-8</sup> cc/sec @ 1 atm (He)

PART NO.					MATERIAL		
CAPACITANCE VALUE <sup>(1)</sup>	SERIES	L1 ±.005 <sup>(3)</sup>	L2 ±.005 <sup>(3)</sup>	PLATING CODE <sup>(2)</sup>	GLASS	FERRULE	PIN
Cxxx	13A30	xxx	xxx	02	9013	Steel	Alloy 52

Example Part No: C303-13A30-125-095-02

**CAUTION:** The body is symmetrical except for the glass and epoxy seal and is easily reversed upon mounting. Please note that L1 is always the glass side.

- NOTES:**
- (1) Specify capacitance value. Enter first two digits of value then the number of zeros that follow. Example: C303 equals 30,000pF.
  - (2) Standard plating is 50 microinches minimum GOLD per MIL-G-45204, Type III, Grade A over 200-400 microinches NICKEL per MIL-C-26074. Plating thickness is measured on pin.
  - (3) Standard pin termination is straight-cut. Special pin terminations are also available (See Bulletin 100, pg 3).
  - (4) Short term process temperature.
  - (5) Storage temperature.
  - (6) See Bulletin 200 for solder preforms.

**All dimensions are inches.**