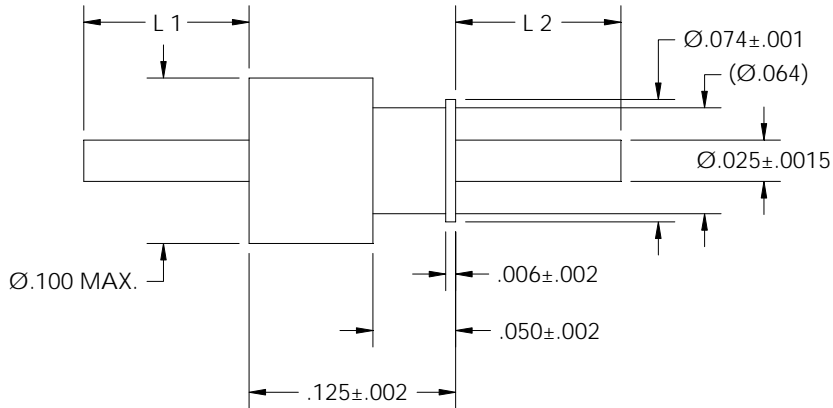




**HERMETIC CAPACITORS
74A25 Series**



ALUMINUM COMPATIBLE

Our compact design is mountable on .100 inch centers and is available with radius pins for connector mating. Designed to MIL-F-15733. Available in capacitance values up to 10,000 pF GMV (+100% / -0).

SPECIFICATIONS	
Voltage Rating	50 VDC (higher available)
Current Rating	5 Amps Max
Insulation Resistance	Greater than 1.5 G Ω @ 25°C
Dissipation Factor	Less than 3% (except 10K pF less than 4%)
Max. Temp. ⁽⁴⁾ / Min. Temp. ⁽⁵⁾ / Operating Range	250°C / -65°C / -55°C to +125°C
Leak Rate	Less than 1 X 10 ⁻⁸ cc/sec @ 1 atm (He)

PART NO.					MATERIAL		
CAPACITANCE VALUE ⁽¹⁾	SERIES	L1 ±.005 ⁽³⁾	L2 ±.005 ⁽³⁾	PLATING CODE ⁽²⁾	GLASS	FERRULE	PIN
Cxxx	74A25	xxx	xxx	02	9013	Steel	Steel

Example Part No: C103-74A25-225-075-02

- NOTES: (1) Specify capacitance value. Enter first two digits of value then the number of zeros that follow. Example: C103 equals 10,000pF.
- (2) Standard plating is 50 microinches minimum GOLD per MIL-G-45204, Type III, Grade A over 200-400 microinches NICKEL per MIL-C-26074. Plating thickness is measured on pin.
- (3) Standard pin termination is straight-cut. Special pin terminations are also available (See Bulletin 100, pg 3).
- (4) Short term process temperature.
- (5) Storage temperature.
- (6) See Bulletin 200 for solder preforms.

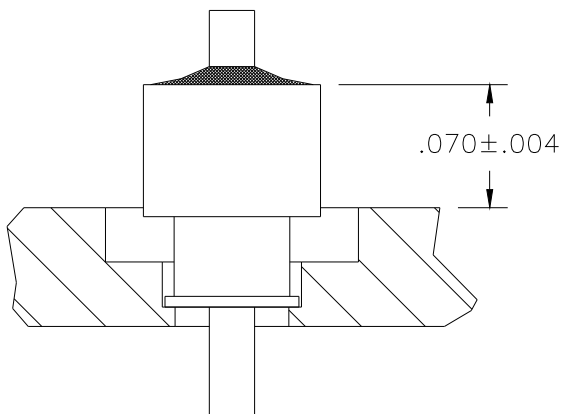
All dimensions are inches.



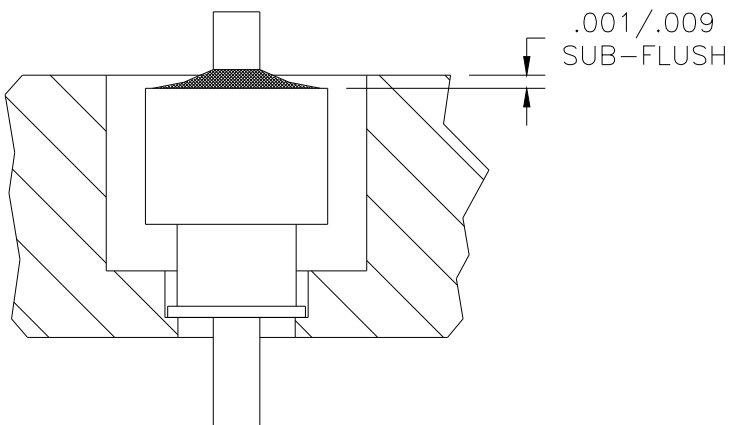
**HERMETIC CAPACITORS
74A25 Series**

APPLICATION DATA

PROTRUDING MOUNT



FLUSH MOUNT



HOUSING PREPARATION	
PROTRUDING MOUNT	FLUSH MOUNT
DRILL .063 ±.002 THRU C'BORE .077 ±.001 DIA. x .055 ±.002 DP. C'BORE .140 ±.002 DIA. x .030 ±.002 DP.	DRILL .063 ±.002 THRU C'BORE .077 ±.001 DIA. x .130 ±.002 DP. C'BORE .140 ±.002 DIA. x .105 ±.002 DP.

All dimensions are inches.